



£1,200 Monthly

Coldbath Road, Birmingham

Semi-Detached House | 3 Bedrooms | 2 Bathrooms

0121 661 9499



www.shapelettings.co.uk



Step Inside

Property Description

Spacious unfurnished family home available NOW. The property is situated in a popular location in king heath within walking distance of the Alcester road, transport links and nearby schools. Three bedrooms, two reception rooms, off-road parking, modern kitchen, family bathroom & a large garden.

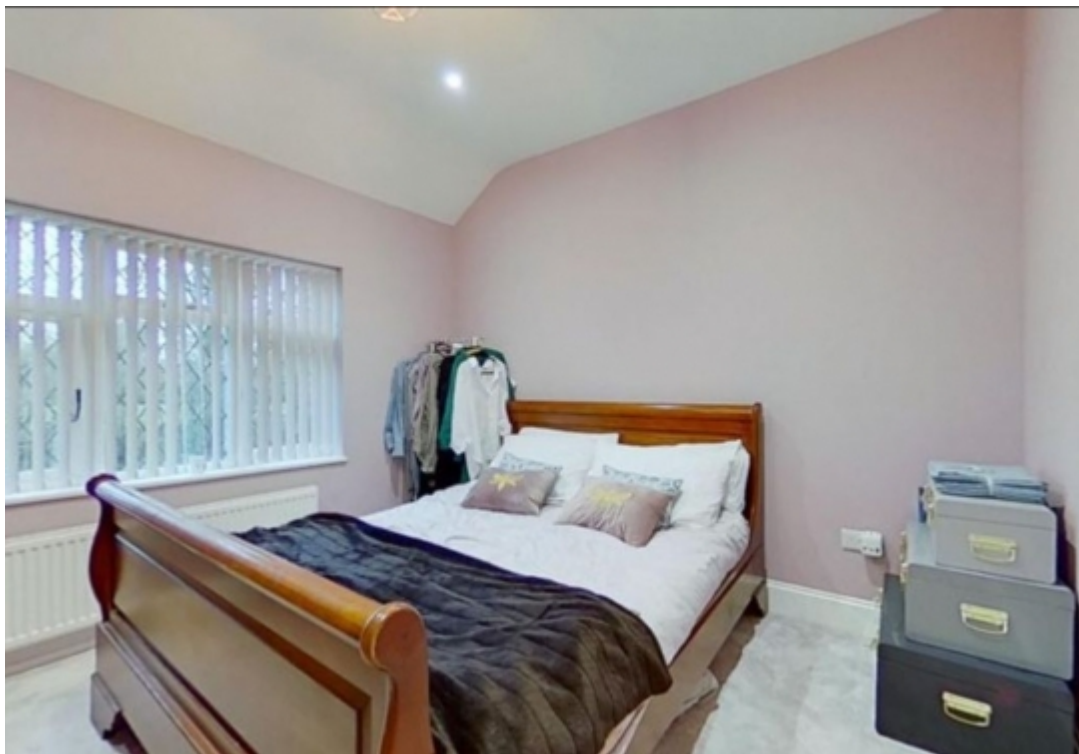
Main Particulars

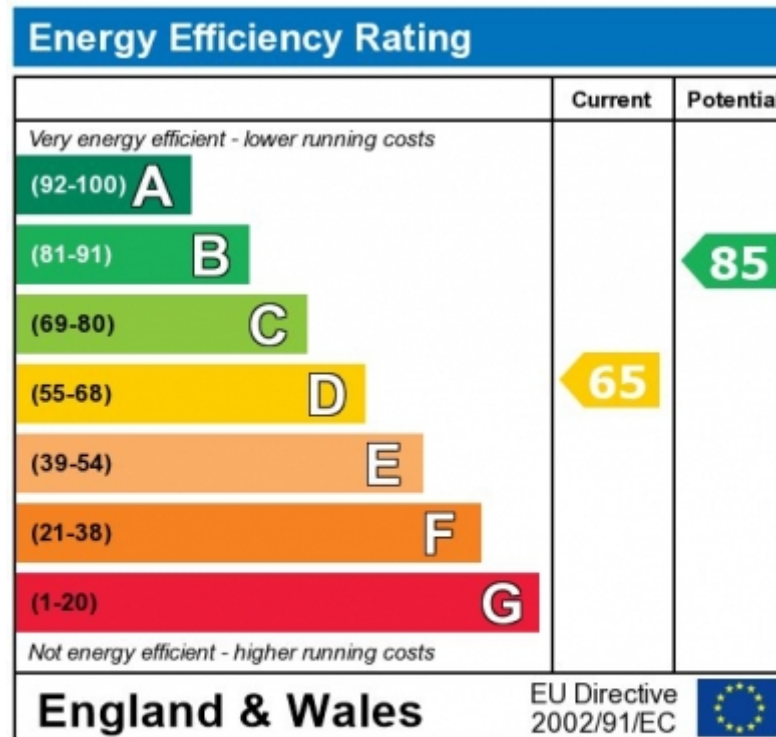
Spacious unfurnished family home available NOW. The property is situated in a popular location in king heath within walking distance of the Alcester road, transport links and nearby schools. Three bedrooms, two reception rooms, off-road parking, modern kitchen, family bathroom & a large garden.

Council Tax Band: c

Deposit: £1,200

Holding Deposit: £276.92





The energy efficiency rating is a measure of the overall efficiency of a home. The higher the rating the more energy

Telephone: 0121 661 9499



www.shapelettings.co.uk